

020 8559 1122

[info@claridges-commercial.co.uk](mailto:info@claridges-commercial.co.uk)

[claridges-commercial.co.uk](http://claridges-commercial.co.uk)

Our Services Include:

- Retail
- Office
- Industrial
- Restaurants & Bars
- Religious, Educational & Medical Premises
- Gyms & Leisure
- Investment & Development
- Rent Reviews, Lease Renewals & Valuations
- Insolvency & Restructuring Advice

## 2 Stunning Duplex Offices

Arranged over Ground & Lower Ground Floors

To Rent / Virtual Freehold for Sale

Chappell Loft, Belmont Street, Camden NW1



## Description

Chappell Lofts is the conversion of the famous Victorian era Chappell Piano Factory into two spacious duplex offices on ground and lower ground floors.

The offices have large industrial windows, 12 ft high ceilings, terrace, exposed feature brickwork and wood panelled walls. Finishing touches include oak parquet flooring throughout, air conditioning, exposed beams, bespoke doors and joinery.

Facilities include DDA passenger lift, disabled access and facilities, bespoke kitchens, separate Victorian restrooms with shower, 24 hour concierge service and wooden floor decked patio area.

Chappel Lofts has a private entrance courtyard with hand laid reclaimed cobblestones, manned security lodge and new bespoke insulated double glazed timber windows. The entrance foyer has oak parquet flooring, exposed feature brickwork, antique factory lights and bespoke steel coffer with LED lighting to ceiling.

## Location

Located on Belmont Street off Chalk Farm Road close to The Roundhouse and adjacent to the amenities of Camden Market (2 mins walk), Camden High Street and Chalk Farm Road. The nearest stations are Chalk Farm, Camden Town (5 mins walk), Kentish Town West (15 mins walk). There are also numerous bus routes from Camden Town, and Chalk Farm Road. The property is ideally located for Central London, West End, Camden and Primrose Hill (5 mins walk) and Regents Park (10 mins walk). It also benefits from Sainsburys and Tesco supermarkets both of which are also within walking distance.

**Areas (gross)** - Over ground & lower ground floors

North Office (Unit A): 420.8 sqm | 4529.4 sqft

South Office (Unit B): 338.8 sqm | 3646.8 sqft

## Terms

### Unit A

Either available on a virtual freehold (999 years) at £4,500,000.

Also available on a new full repairing and insuring lease (term to be agreed) at £195,000 pa.

### Unit B

Either available on a virtual freehold (999 years) at £3,500,000.

Also available on a new full repairing and insuring lease (term to be agreed) at £145,000 pa.

## Service Charge

Unit A - £20,000-£21,000 (+VAT) pa

Unit B - £17,000-£18,000 (+VAT) pa

## Legal Costs

Each party to bear their own legal costs.

## Business Rates

London Borough of Camden – Rateable value TBC. Interested parties should make their own enquires via the Local Authority or Valuation Office [www.voa.gov.uk](http://www.voa.gov.uk). Claridges cannot guarantee any figures.

**EPC** - Band C

## Reference Charge

Claridges charges a fee of £525 plus VAT for taking up references and carrying out anti-money laundering checks on the proposed tenants. This fee is non refundable after the references have been taken up, whether they are accepted or not by the Landlord.

## Holding Deposit

Tenants or purchasers wishing to secure this property will be required to pay a holding deposit to Claridges of £5,000. This deposit is not refundable except if the vendor withdraws, clear title cannot be proved or the tenants references are not acceptable to the landlord. This deposit is held in our clients account until completion.













**NORTH OFFICE**



**BRIGHT GARDEN FLOOR**



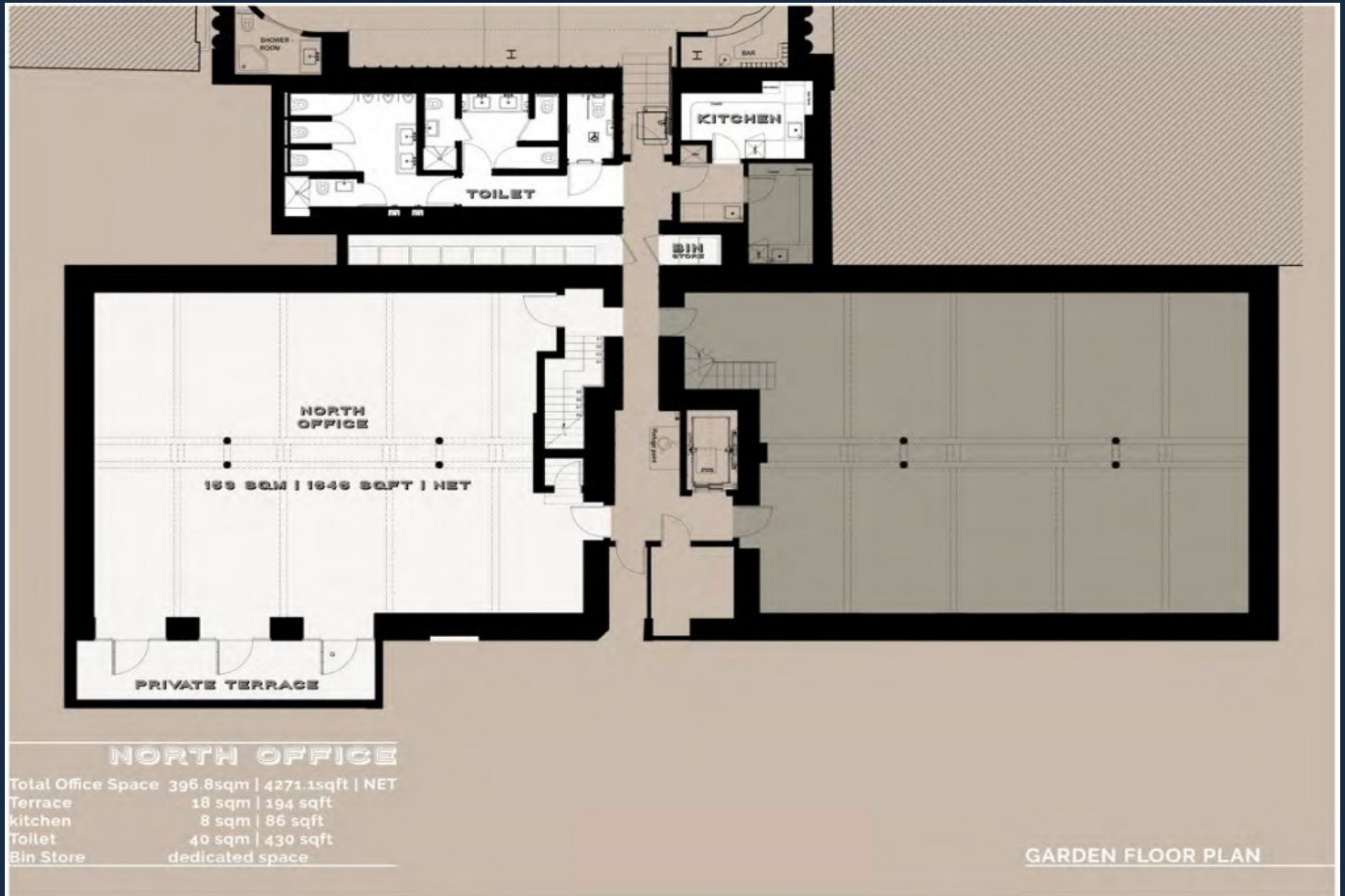








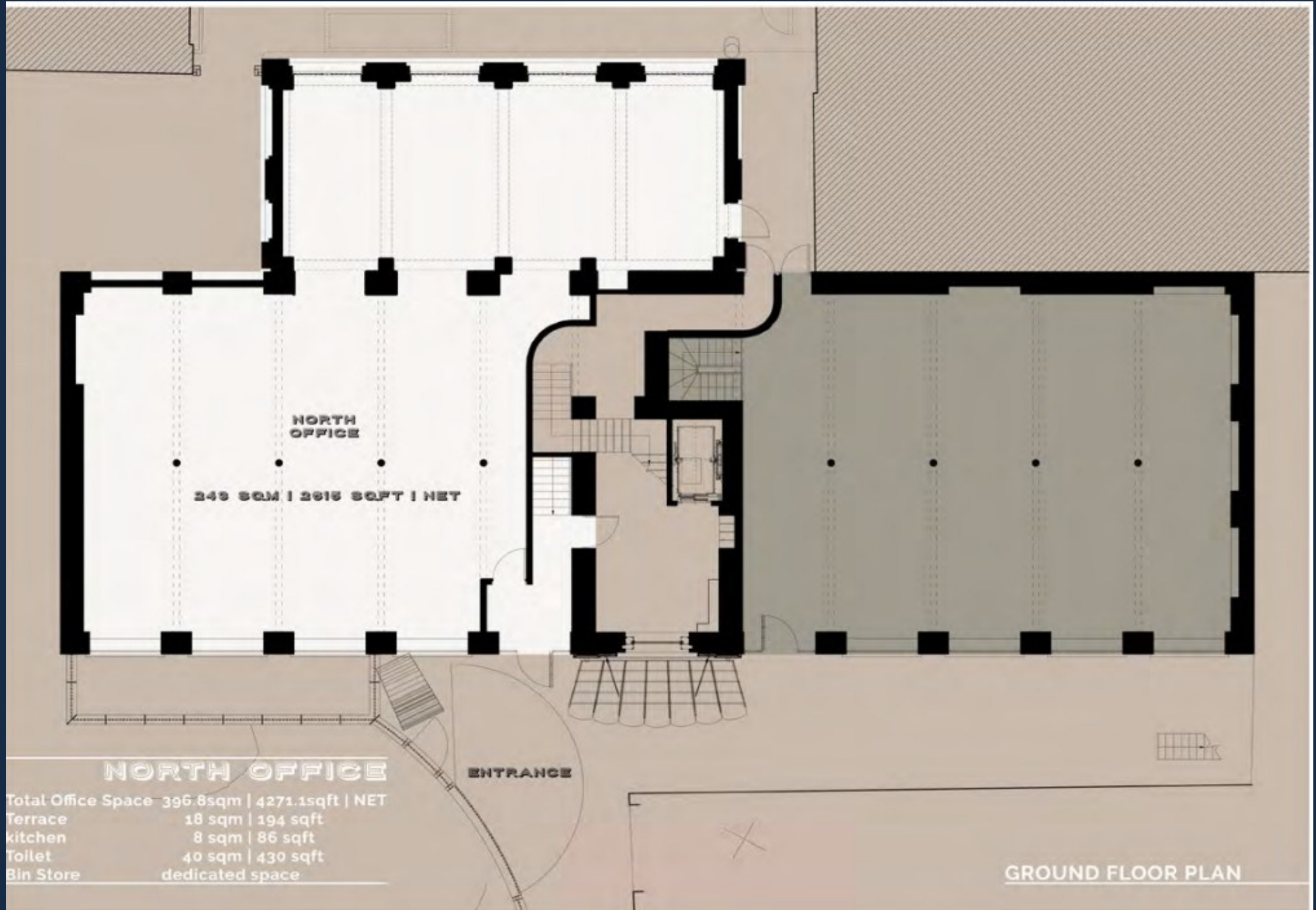
**CLARIDGES**  
COMMERCIAL PROPERTY CONSULTANTS







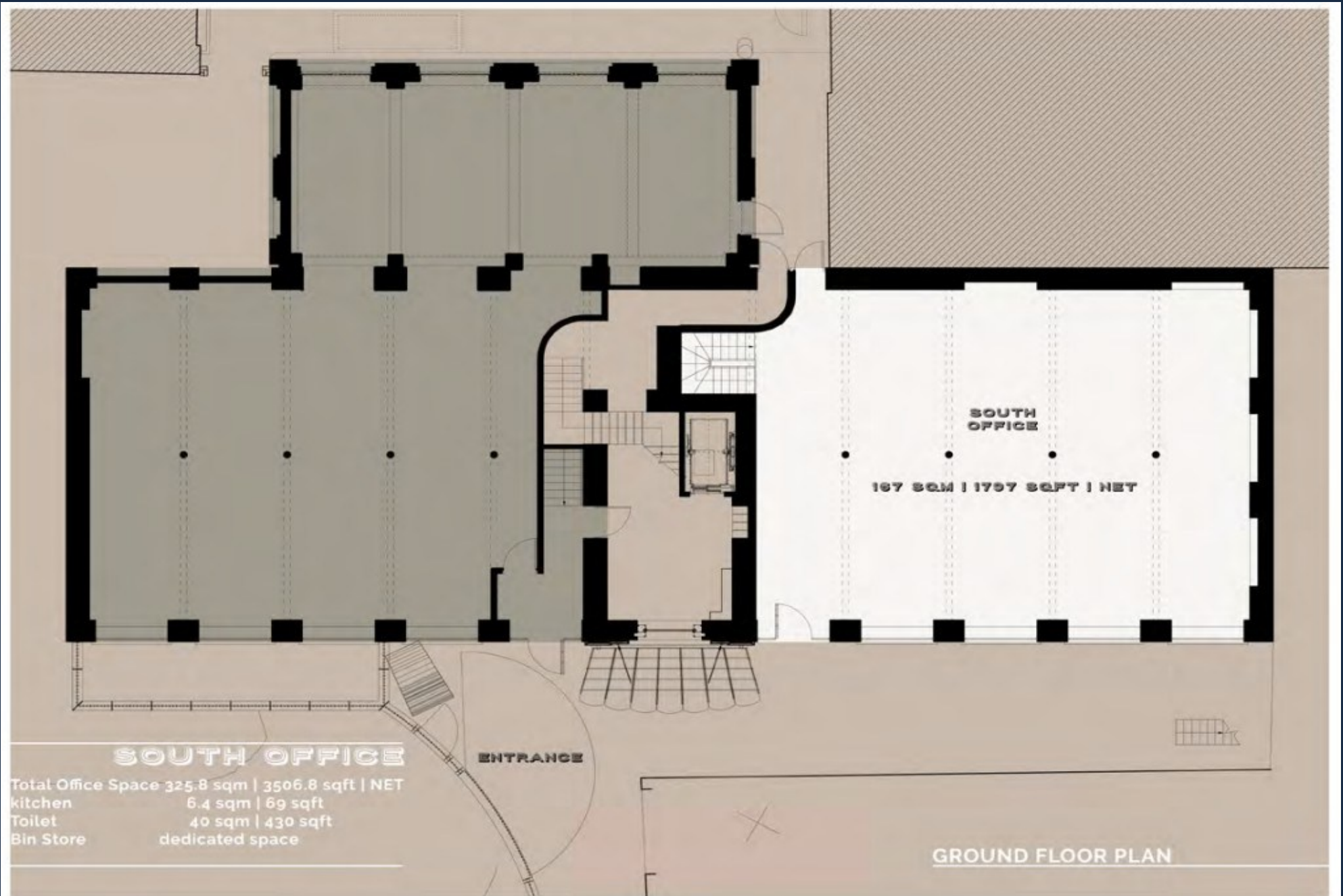
**CLARIDGES**  
COMMERCIAL PROPERTY CONSULTANTS







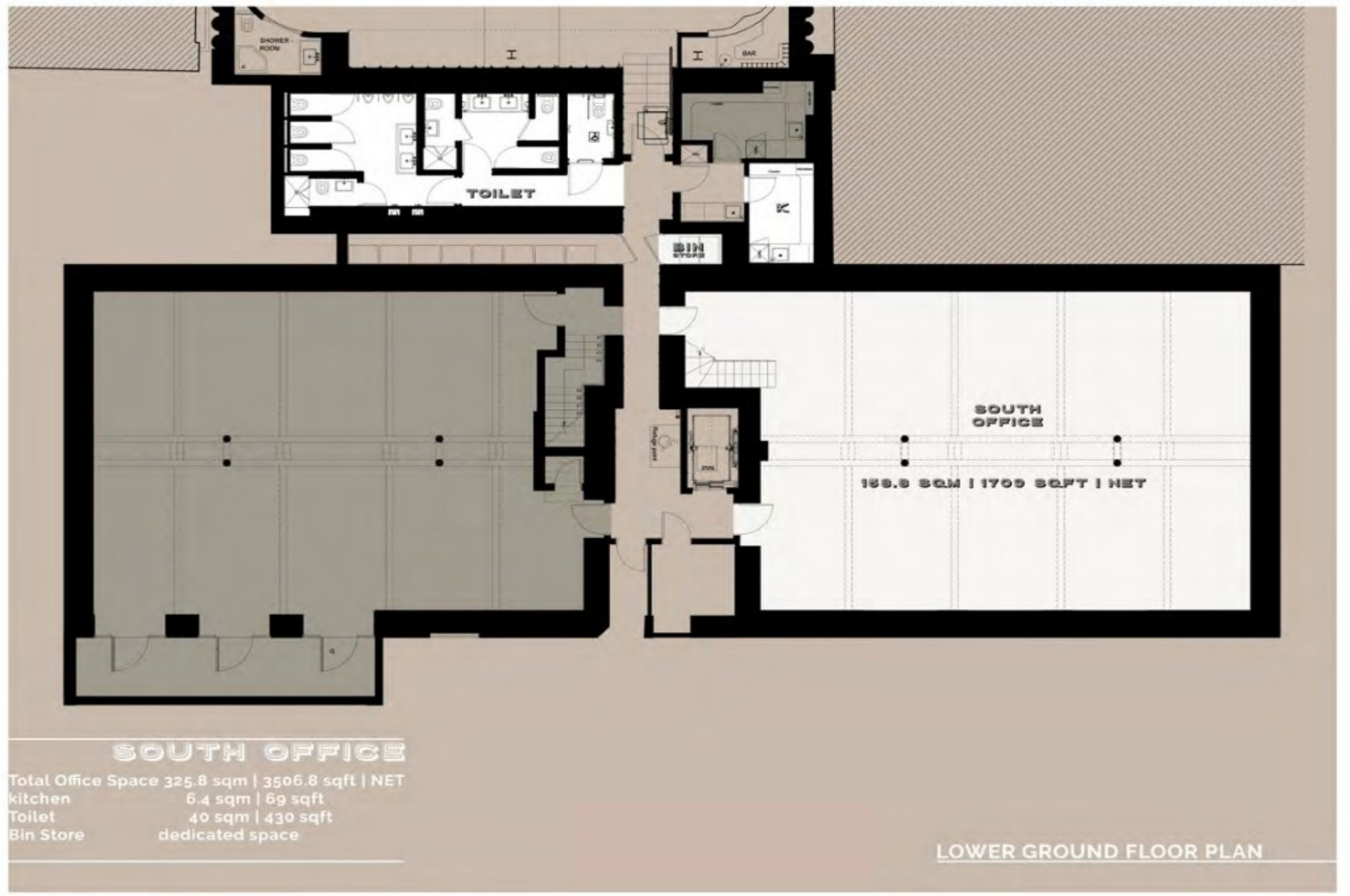
**CLARIDGES**  
COMMERCIAL PROPERTY CONSULTANTS



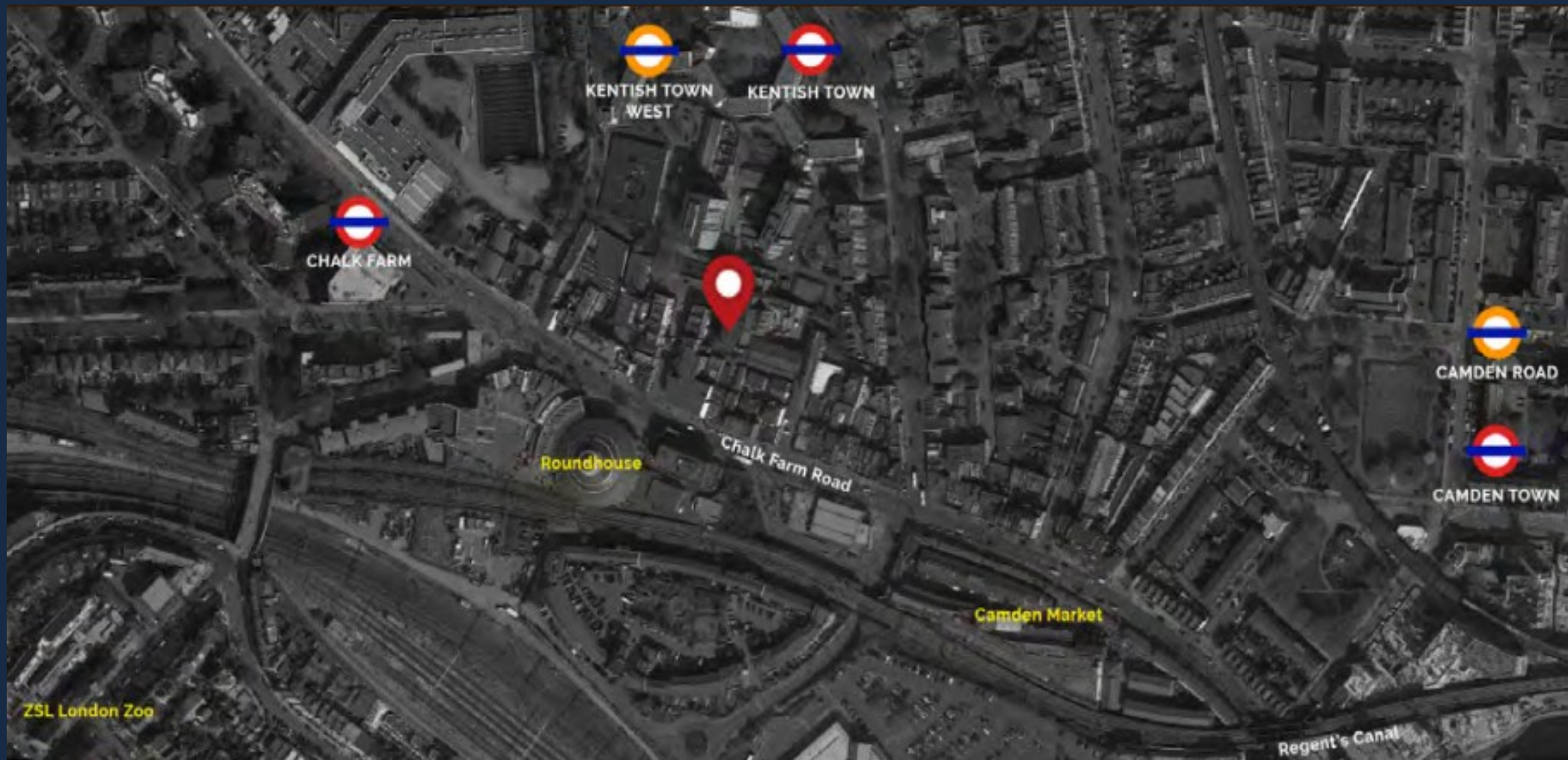




**CLARIDGES**  
COMMERCIAL PROPERTY CONSULTANTS









These property particulars have been prepared in all good faith to give a fair overall view of the property. If you require any further information or verification of any points particularly relevant to your interest in this property, please ask.

It should be noted that nothing in these particulars shall be deemed to be a statement that either the property is in good structural condition, or that any services, appliances, installations, equipment or facilities, are in good working order and services connected. No plant, machinery or appliance electrical or mechanical, present at the day of inspection has been tested and accordingly purchasers should satisfy themselves on such matters prior to purchase.

These particulars are given as a general guideline only, and do not constitute, nor constitute any part of an offer or contract. Any photographs included within these particulars depict only certain parts of the property and no assumptions should be made with regard to parts of the property that have not been photographed. Furniture, furnishings, personal belongings and other contents, etc., shown in the photographs must not be assumed to be included in the sale, neither should it be assumed that the property or the contents remain as displayed in the photographs. If in doubt, please ask for further information.

Measurements, descriptions, areas or distances referred to within the particulars, or indeed within any plan or plans associated with the property are given as a guide only and must not be construed to be precise. If such information is fundamental to a purchase, purchasers are advised to rely upon their own enquiries.

Purchasers are advised to make their own enquiries regarding such matters relating to Planning Permissions or potential uses referred to within the particulars, where such information is given in good faith by Claridges. Information relating to rating assessments has been given verbally. Intending purchasers/tenants should satisfy themselves as to its accuracy from the Local Authority.

No responsibility can be accepted for any expenses incurred by intending purchasers in inspecting properties, which have been sold, withdrawn or are under offer. Claridges do not hold themselves responsible, in negligence or otherwise, for any loss arising from the use of these particulars.

Claridges have not undertaken any environmental investigations in respect of land, air or water contamination. The purchaser/purchasers are responsible for making their own enquiries in this regard.

It must be appreciated that in preparing these particulars, descriptions given of the property by the author are personal and subjective and are used in good faith as a personal opinion and not as a statement of fact. To ensure that our descriptions are likely to match any expectations you may have of the property, we strongly recommend and advise that you make additional and specific enquiries.

Unless otherwise stated, in accordance with The Finance Act 1989, all prices and rents are quoted exclusive of VAT. (VAT may be chargeable upon some rents and premiums), purchasers and tenants should satisfy themselves during their due diligence if VAT is payable.

These details are believed to be correct at the time of compilation but may be subject to subsequent amendment.

## GDPR

General Regulations (GDPR) took effect on 25 May 2018.

As a business we must have a lawful basis to process personal data, and therefore we require your written consent to hold your personal data on our files.

## Anti Money Laundering

Due to recent changes in the Anti Money Laundering regulation it is now standard procedure to undertake a personal and company and general AML checks.

Please note this is taken up for both landlord/vendor and tenant/purchaser and any other entity that has a relationship with the property.

## Viewing

By appointment only via:

0208 559 1122

[info@claridges-commercial.co.uk](mailto:info@claridges-commercial.co.uk)  
[claridges-commercial.co.uk](http://claridges-commercial.co.uk)

## Offices

17 Hanover Square  
London W1S 1BN

Connaught House, Broomhill Road,  
Woodford Green, Essex IG8 0XR